

Core acceptance criteria

BRAKE CALIPER



ECO LOGICAL
NOMICAL



WABCO
REMAN SOLUTIONS

General information

ACCEPTED



- Core must be for brake discs either 330mm, 375 mm or 430 mm.
- Core must be from one of type ADB: PAN-range MAXX-range
- Core must be in an off-vehicle condition.
- Core must meet acceptance standards established within this document.
- The brake caliper must not be cracked, broken or deformed.
- The body must not be strongly corroded or burnt (structure stability disturbance).
- The threads must not be damaged.
- The caliper must be complete and not disassembled.

REJECTED



- The core is a not complete unit and disassembled or altered in any manner.
- The core is damaged by non-operational causes such as car crash damage, fire, crack, stuff losses.
- The core has been improperly repaired / serviced.

Acceptance criteria

ACCEPTED



Surface Corrosion



Acceptance criteria

REJECTED



Heavy pitting corrosion (Not off-vehicle condition)



REJECTED



Pitting corrosion (structure of cast is degraded)



REJECTED



Missing part



Acceptance criteria

REJECTED



Cracked frame or carrier



REJECTED



Cracked caliper frame



REJECTED



Cracked frame or carrier



Acceptance criteria

REJECTED



Disassembled devices



REJECTED



Screws are not be broken



REJECTED



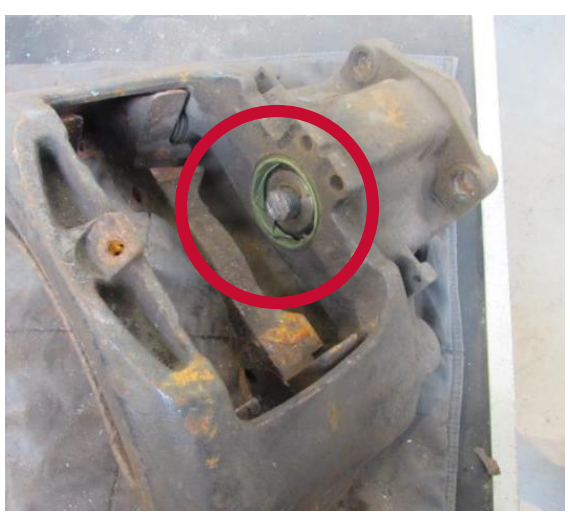
Cut screw



REJECTED



Cut adjusting screw



Acceptance criteria

REJECTED



Corrosion in guiding holes



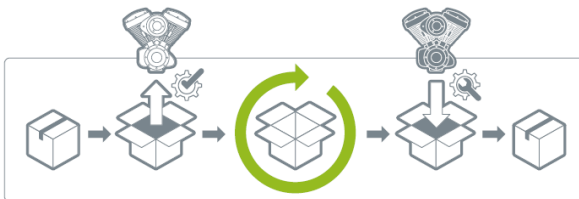
Your used part can go for *a second life!* Return it to WABCO and get your refund!

When you buy remanufactured part from WABCO Reman Solutions and return your used cores to us, you will get a **refund!** On top of that, by producing less waste, you will also **save on costs of disposal** and **benefit the environment.**



THIS IS HOW IT WORKS:

- **Use the box** of the remanufactured parts to return your used cores.



- **Contact your authorized WABCO partner**
www.wabco-auto.com/findwabco to pick up the box.
 - **You will receive a refund** for the surcharge you've paid with the purchase of your remanufactured parts.
- It's as simple as that!**

For more info, see myWABCO
<https://www.am.wabco-auto.com>

WABCO
REMAN SOLUTIONS

Revision history

Revision	Content of the change	Release date	Approved
01	First issue	2020.06.10	M.M.