

Core acceptance criteria

AXLE MODULATOR



ECO LOGICAL
NOMICAL



WABCO
REMAN SOLUTIONS

General information

ACCEPTED



- Core must be in an off-vehicle condition.
- Core must meet acceptance standards established within this document.
- Acceptable part numbers:

Axle Modulator Gen I	Remanufactured Axle Modulator Gen I
480 103 XXX 0	480 103 XXX R

- Core must be younger than CW01 2000

REJECTED



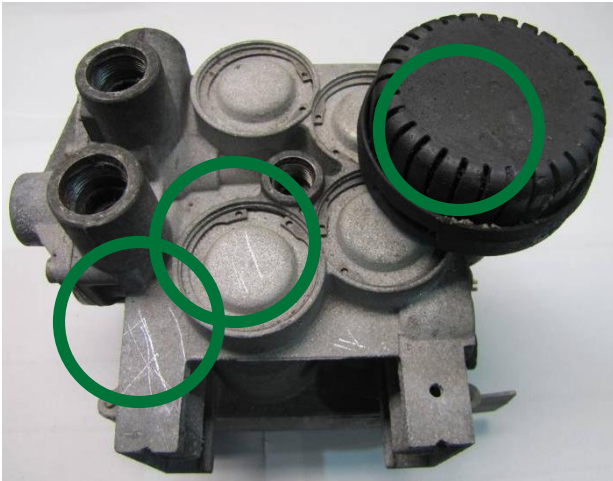
- The core is a not complete unit and disassembled or altered in any manner.
- The core is damaged by non-operational causes such as car crash damage, rough handling, fire or improper removal, crack, stuff losses.
- There has been prior attempt at rebuilding the component.

Acceptance criteria

ACCEPTED



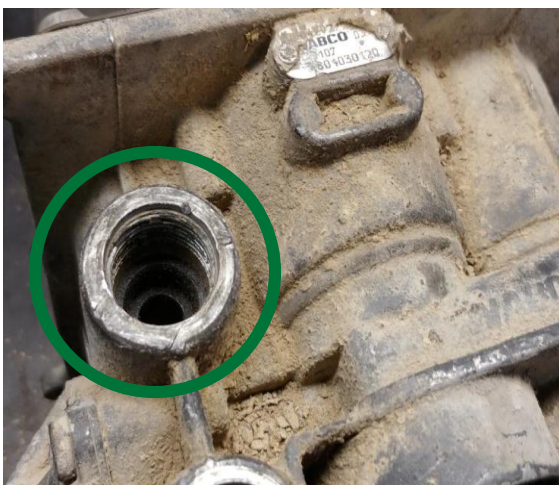
Small scratches on the body, silencer and covers



ACCEPTED



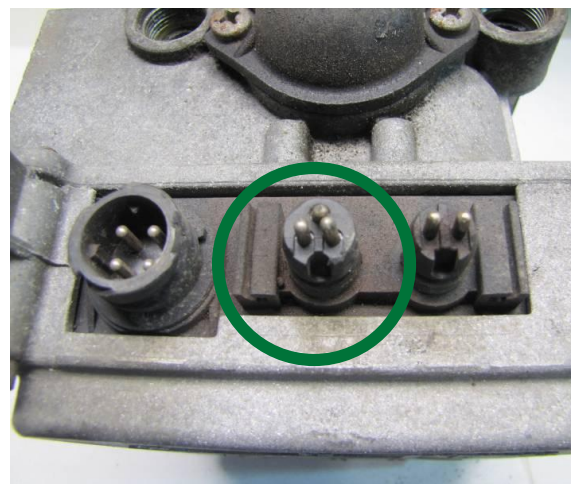
Damaged ports



ACCEPTED



Bent Pins, Scratches on connector



Acceptance criteria

ACCEPTED



Broken part of connector frame



ACCEPTED



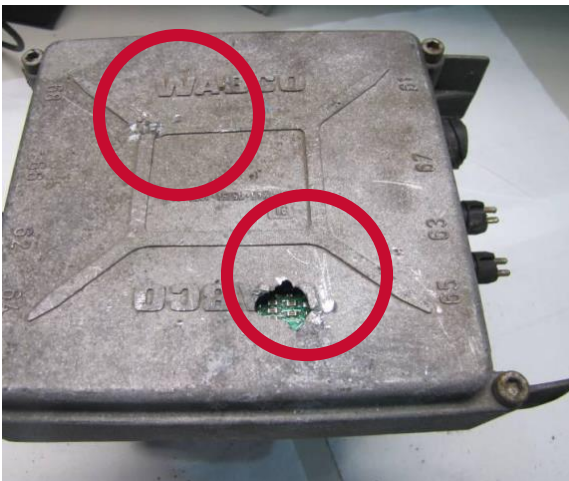
Cutted, damaged or missing cover flips



REJECTED



Serious damages or signs of hit on the external surfaces, missing material



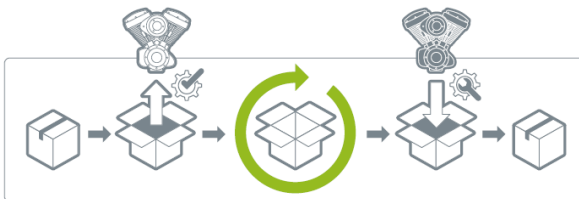
Your used part can go for *a second life!* Return it to WABCO and get your refund!

When you buy remanufactured part from WABCO Reman Solutions and return your used cores to us, you will get a **refund!** On top of that, by producing less waste, you will also **save** on costs of disposal and **benefit the environment.**



THIS IS HOW IT WORKS:

- **Use the box** of the remanufactured parts to return your used cores.



- **Contact your authorized WABCO partner** www.wabco-auto.com/findwabco to pick up the box.
 - **You will receive a refund** for the surcharge you've paid with the purchase of your remanufactured parts.
- It's as simple as that!**

For more info, see myWABCO
<https://www.am.wabco-auto.com>

WABCO
REMAN SOLUTIONS

Revision history

Revision	Content of the change	Release date	Approved
01	First issue	2020.06.10	M.M.