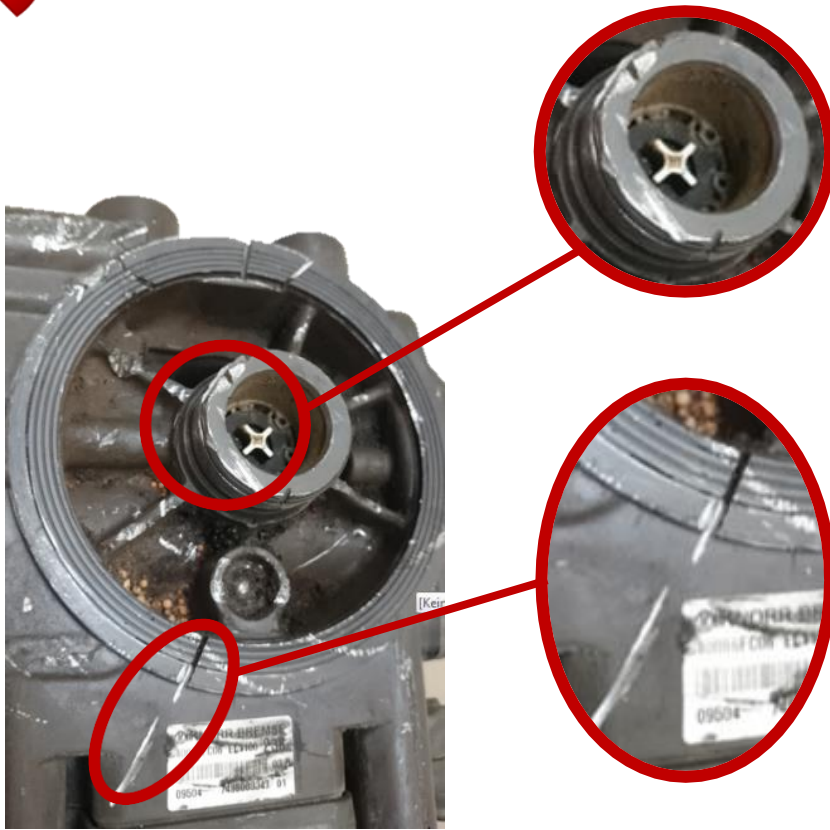


Major Damages – Mechatronics



Heavily damaged ports, threads, housings, e.g. of circuit boards, deep scratches on surfaces caused by non-operational use

Major Damages – Mechatronics



Heavily damaged housings caused by non-operational use

Major Damages – Compressors



Broken housings

Major Damages – Compressors



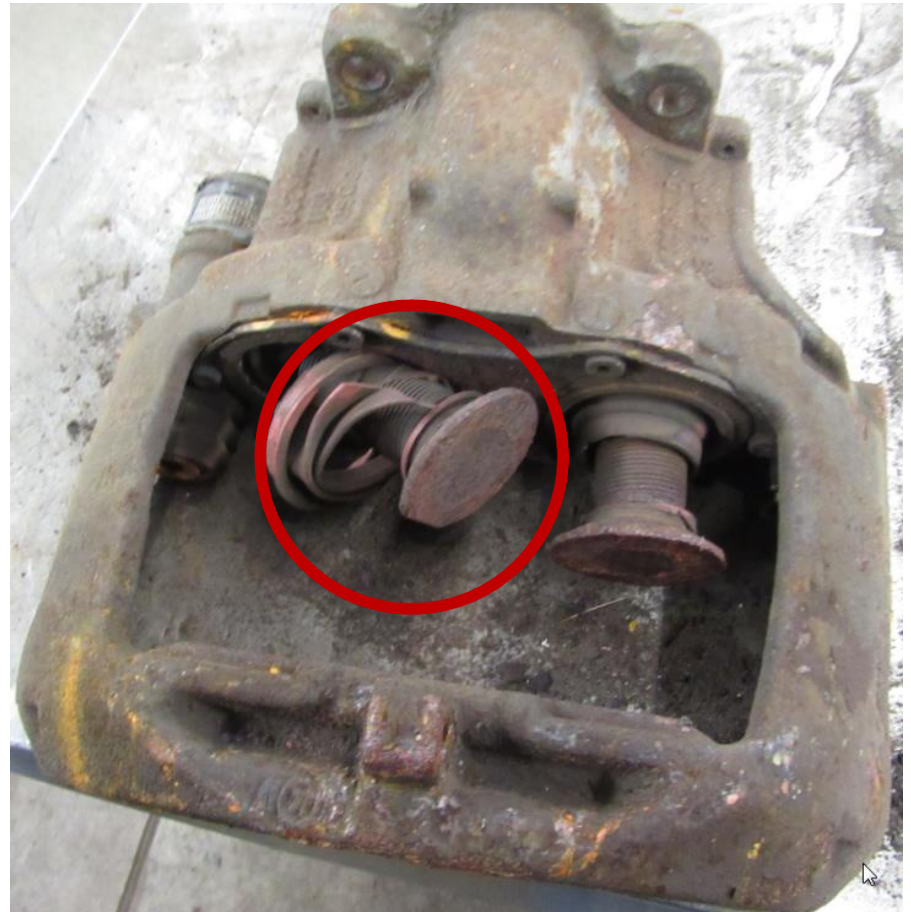
Broken housings

Major Damages 1/5 – Air Disc Brake Calipers



Notch cut

Major Damages 2/5 – Air Disc Brake Calipers



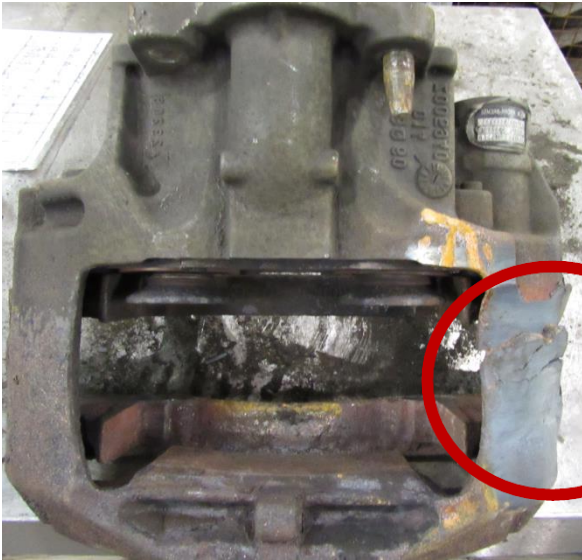
Broken / Damaged tappets

Major Damages 3/5 – Air Disc Brake Calipers



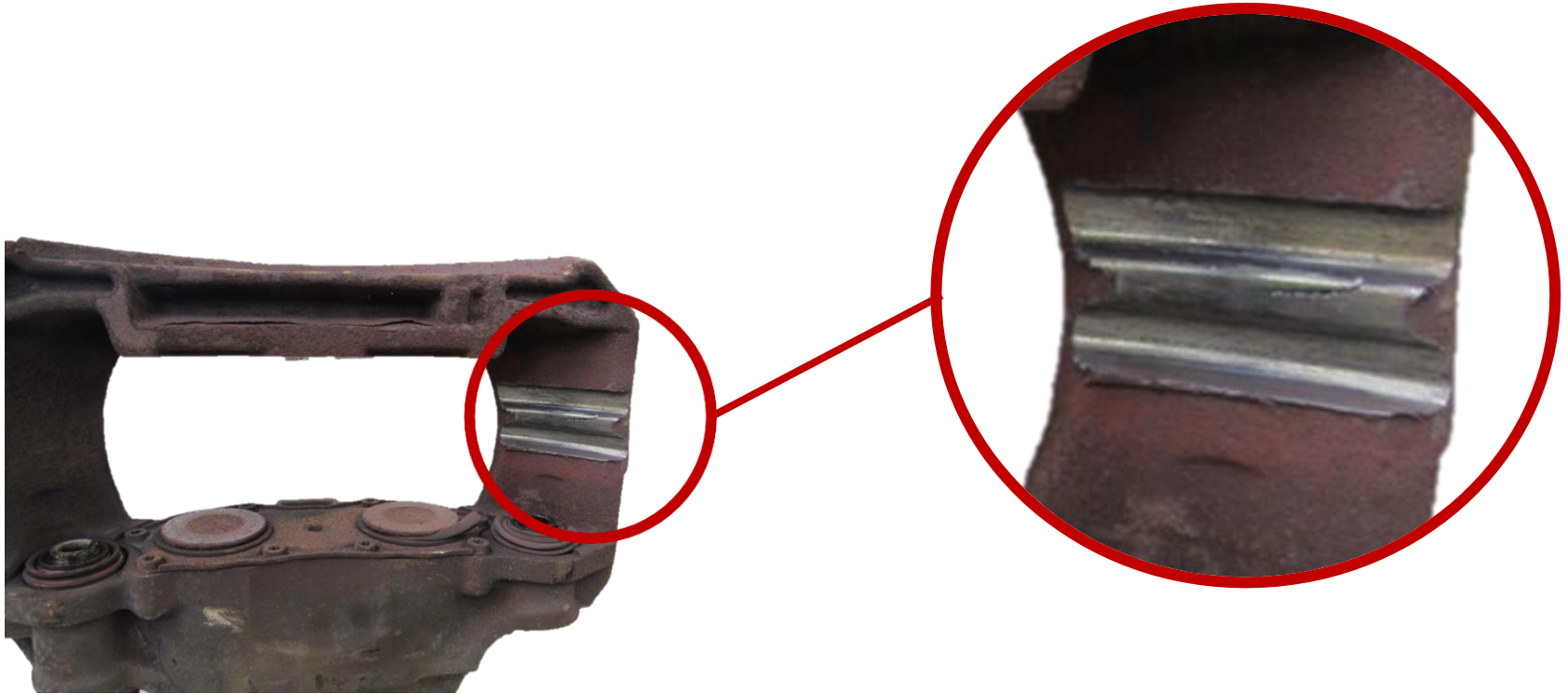
Abrasion on surfaces

Major Damages 4/5 – Air Disc Brake Calipers



Abrasion on surfaces

Major Damages 5/5 – Air Disc Brake Calipers



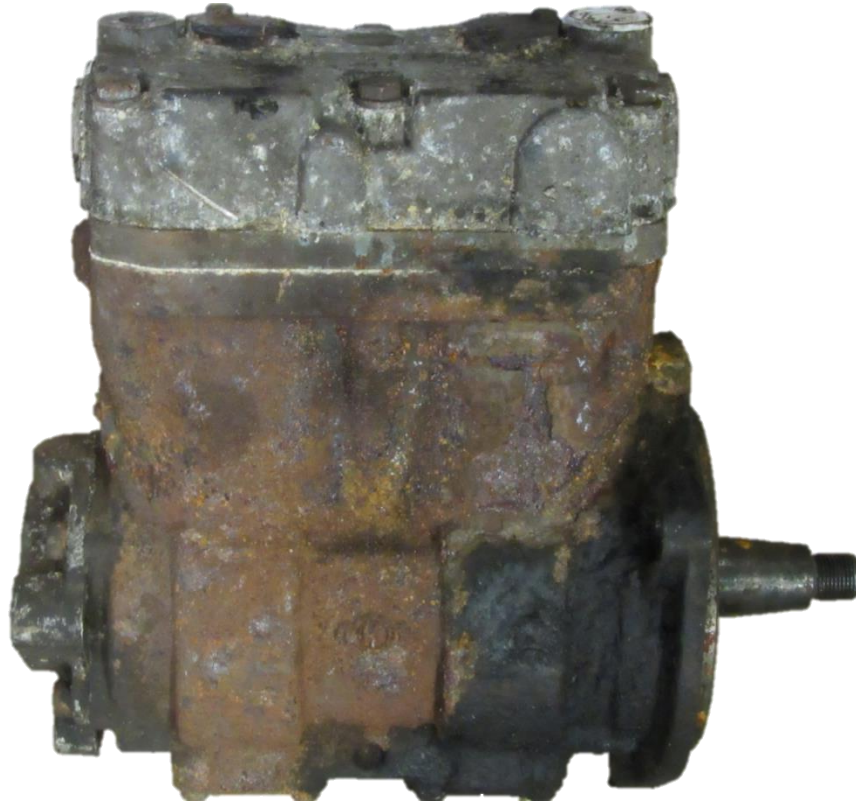
Abrasion on surfaces

Heavy Corrosion – Mechatronics



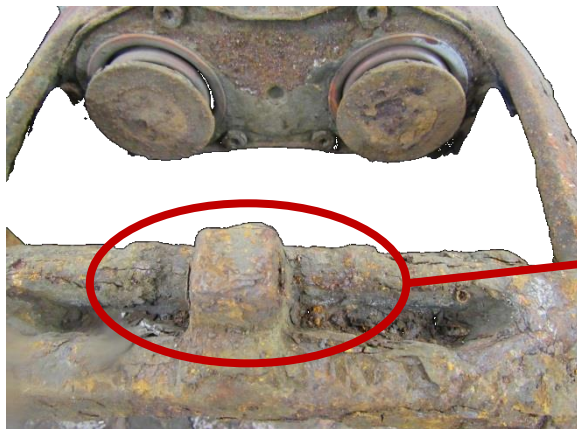
Heavily corroded housings

Heavy Corrosion – Compressors

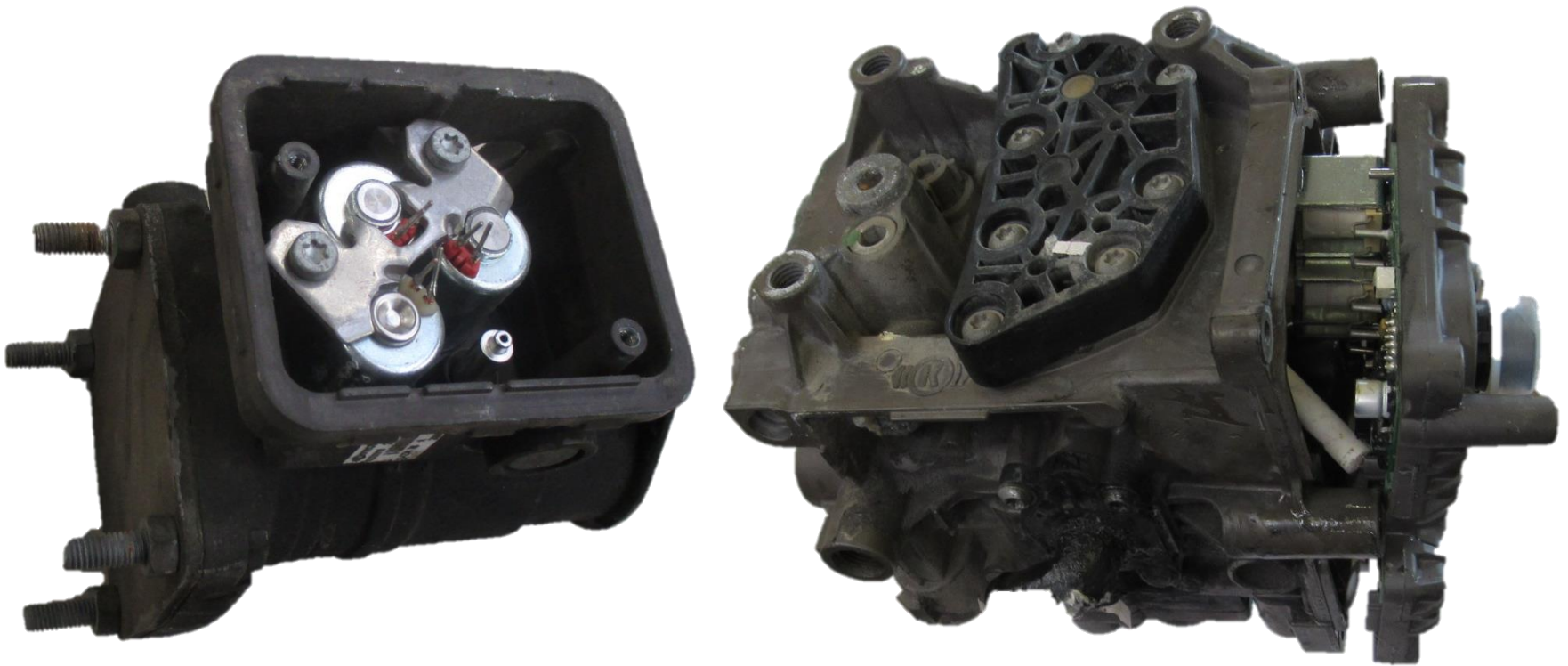


Heavily corroded housings

Heavy Corrosion – Air Disc Brake Calipers



Incorrectly, incompletely assembled, disassembled condition – Mechatronics



Missing housing, disassembled condition

Incomplete- Compressors



Missing cover